



*Topre*

CORPORATE PROFILE

Creation of **new lifestyle**



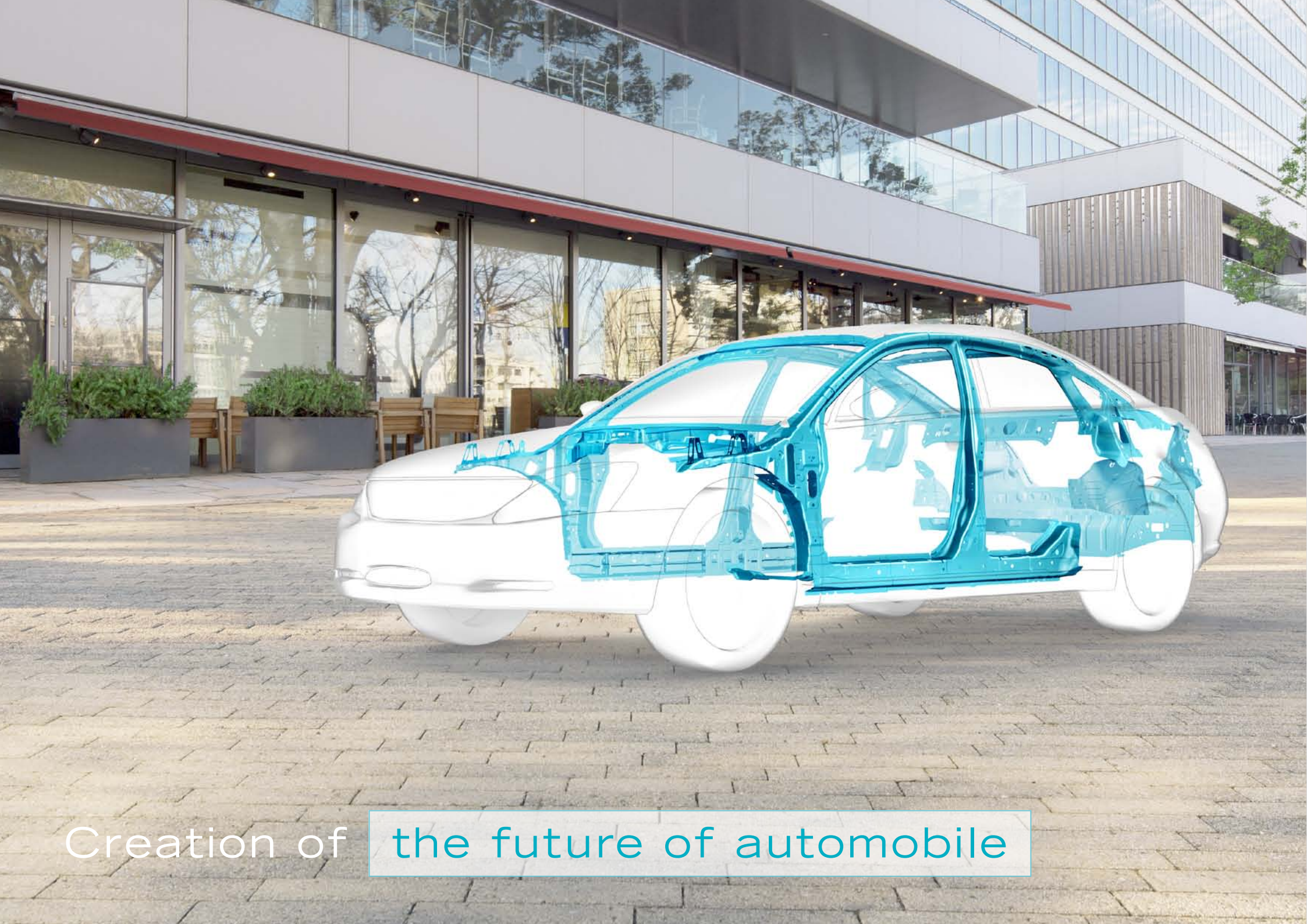
We create every kind of products from a sheet of metal.  
We pursue strength, lightweight, finesse, and precision.  
Since our establishment in 1935, Topre has been expanding the possibility of  
metal press forming technology.

Our innovations and developments assume a critical role,  
When the automobile industry creates safe and environmentally-friendly products,  
And when refrigerated vehicles secure food safety.  
Topre's unique technologies and creativity can be found,  
In air-conditioning equipment necessary for cleaner atmosphere,  
And in electronic equipment indispensable for the future of IT society.

Creation for new lifestyle and business environment.  
Creation for the future of society.  
Topre products, creating the future of our world.

***Topre***





Creation of the future of automobile

# Press-related Products

## Technology of metal press forming, changing the future of automobile.

Since our establishment in 1935, Topre has been advancing metal press forming technology. Utilizing unique die design technology and originality and sophisticated planning & developing ability as an independent manufacturer, we have been developing a multitude of high quality automobile parts. In addition, we are equipped with multiple types of CAD software and CAE system for high precision analysis so that we can respond to each customer's requirements. This fully equipped development environment is completed by our integrated production system. We can carry out all processes, from development to mass-production, in a short turnaround to fulfill our customers' demands quickly and accurately.

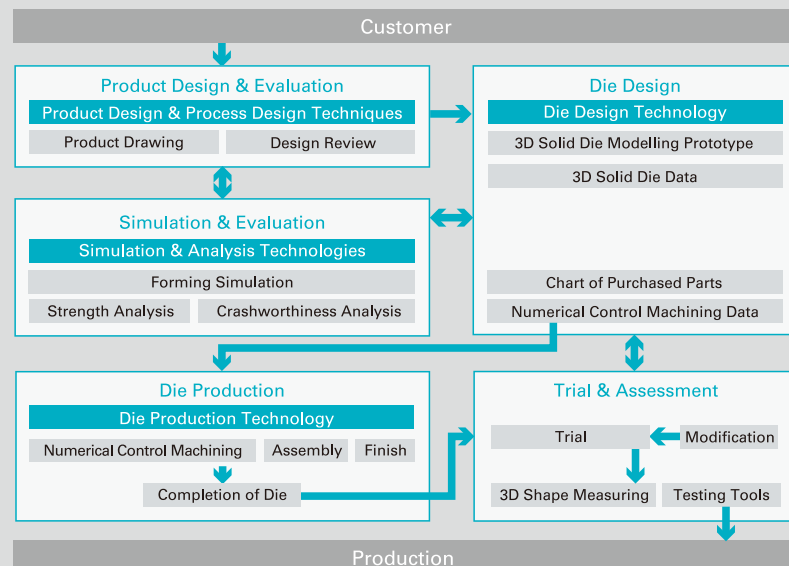
## Metal press forming technology enables more environmentally friendly driving.

One of many advantages at Topre is metal press forming technology for high-tensile steel plates. High-tensile steel plate has especially high strength and lightness among many steel materials, but its press forming was very difficult. With our high technical capabilities, Topre was quick to start commercialization of press formed high-tensile steel plates. We have even succeeded in press forming of ultra-high-tensile steel plates with the strength of 1470MPa. Furthermore, by simultaneously implementing press and thermal processes on steel plates, we improved the material strength significantly. In this method, we aim to achieve material strength of 2000MPa. For battery cases, introduction of the closed sectional shape has led us to improve rigidity and decrease cost. We are cultivating lighter weight, reinforced automobile parts for the purpose of supporting achievement of CO<sub>2</sub> emissions-reduction target and improvement of fuel efficiency.

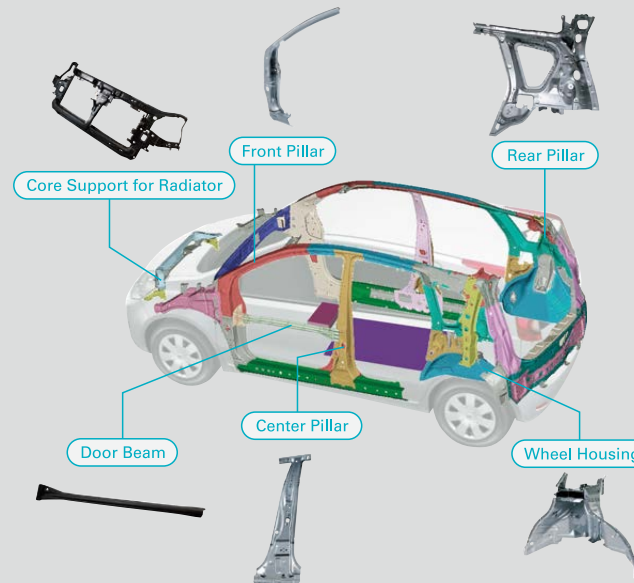
## Continual improvement of technology for every living and business environment.

Topre provides its signature technology in daily lives and various business fields. Our sophisticated metal press forming technology is utilized in other fields than the automobile industry. In the office automation equipment category, we have taken part in the early development stage of photocopiers and printers, including strength analysis by CAE and mass-production planning, to ensure the high specifications demanded by manufacturers for their housings. In the traffic light apparatus business, we have been developing easy to maintain and install products. Flexible application of our core technology in different business fields is one of our advantages.

## Design and Evaluation Cycle

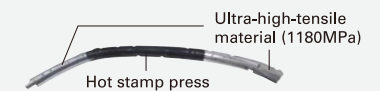


## Main Mass-production Products



### Battery Case

Suitable shape and thickness are selected by analysis for lighter weight and more stiffness.



### Hot Stamp Press Product

Topre developed new hot stamp press method for more strength and lightness. In this new hybrid method, press process and thermal process are simultaneously implemented on steel plates.

## Application of metal press forming technology



Traffic light apparatus



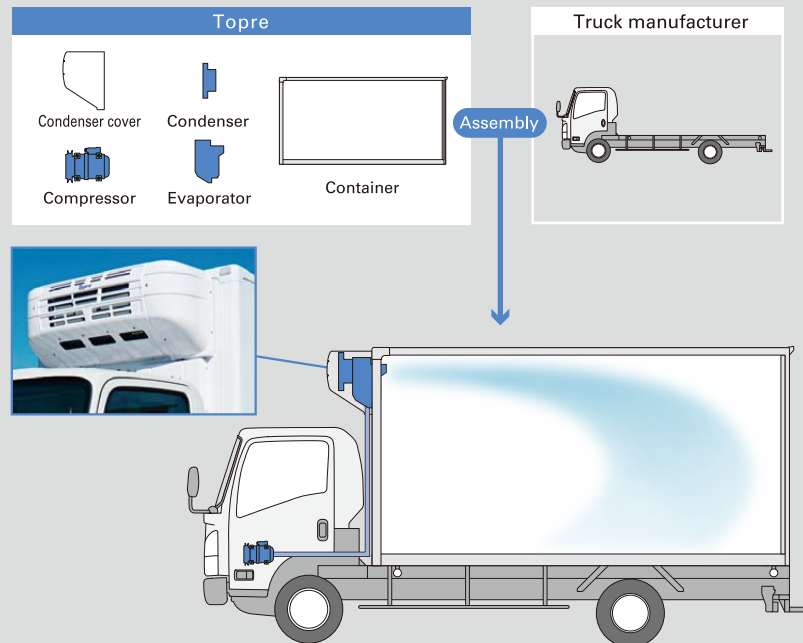
Creation of the food safety

# Constant Temperature Logistics Products

## Topre's integrated production system for precise thermal control.

Precise thermal control is indispensable for safe and flavor/taste conscious delivery of foods. We are the only manufacturer in Japan who has integrated production system for refrigeration units and containers, with selectable materials for containers from highly durable FRP of high thermal insulation capacity or lightweight aluminum. The product line includes variety of vehicle types such as small trucks and large trucks, and temperature specification is selectable from low to middle temperature settings and those with heating function. Topre will delivery suitable refrigerated vehicles to every customer.

## Only manufacture in Japan who has integrated production system for refrigeration units and containers.



## Unprecedented technologies and creativity, providing the next generation deliciousness and safe food.

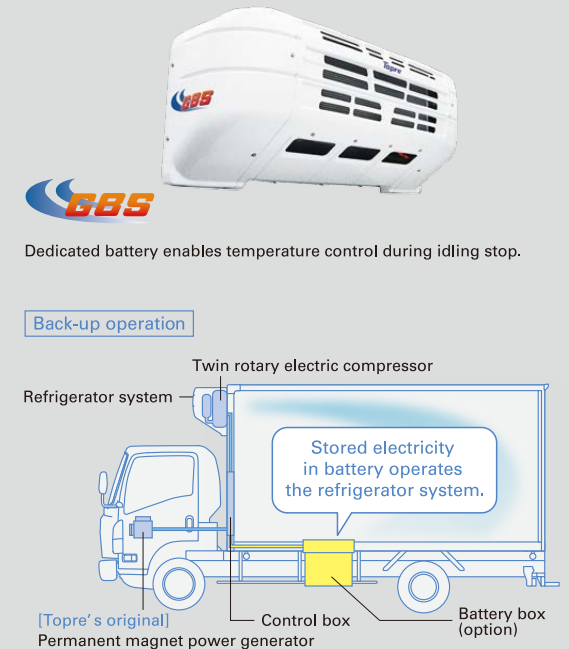
One example of our innovations is the RH (refrigerant-heating) system which enables both cooling and heating using refrigerant. Now, utilizing our heat pump technology, we have enabled deliveries to cold regions and added a function for keeping the inside of the container dry. Our XV Series utilizes the lightest frame in the industry and high-efficient thermal exchange system for improved cooling capacity, delivering higher performance (10% or more) than existing models. Topre will keep on contributing to the society with its advanced thermal control technologies.

## Sophisticated cooling/heating control technology for the advancement of refrigerated vehicles.



## Environmentally friendly refrigerated vehicles with more operational and economic efficiencies.

Topre's unique technologies also give sufficient consideration to environmental problems. One example is the GBS (generator battery system) which generates electricity while driving and stores the surplus in battery. As the refrigerator system keeps operating at the time of idling stop, energy saving and emission reduction are simultaneously achieved. Cold strage freezing plate back-up system is an urban-oriented, efficient refrigeration system which combines mechanical refrigeration and cold strage freezing plate. Topre commits to its mission by decreasing environmental burden and improving cooling capacity and durability of refrigerated vehicles.



Creation of **comfortable air**





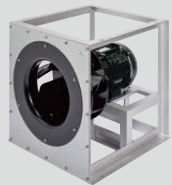
# Air-conditioning Equipment

## High performance fans, innovating the future concepts of comfortability and cleanliness.

Topre's signature metal press forming technology makes it possible to manufacture high quality fans with high efficiency and low noise features. Our systemization and unitization efforts are now resulting in wider application of our products at office buildings, factories, hospitals, and houses.

To fulfill the demands of each facility, our air-conditioning equipment delivers optimum air volume and heat quantity, high cleanliness and energy-saving capacity. While pursuing technology advancement, we are taking care of the environment by selecting environmentally-friendly materials, improving the recycling rate and decreasing waste materials and substances with high environmental load. In the home ventilation system category, we address the needs of a low birth rate and an aging population, and are trying to solve the problem of sick building syndrome. Easy maintenance design is another advantage of our system.

## High performance fans and units to satisfy many different requirements.



Plug fan with motor



Fan filter unit



VAV (Variable Air Volume) air-conditioning system



Desiccant Humidity Control Ventilator "DesiTop"

## Topre delivers 100 sizes of fans, units, and air-conditioning system.

Topre delivers highly efficient, low-noise sirocco fans and plug fans for various kinds of air-conditioning equipment. More than 100 sizes of fans and their combined units can satisfy every need of our customers, to achieve our own goal of high market share.

Combined with fan, motor, and filter, our unit products are utilized at semiconductor factories as well as operating rooms and ICUs of hospitals where clean air is indispensable. Suitable for air-conditioning in buildings, the VAV (Variable Air Volume) and newly developed DesiTop desiccant humidity control ventilator realize energy-saving office space.

## Topre's unique home ventilation system makes a comfortable living environment at low energy houses.

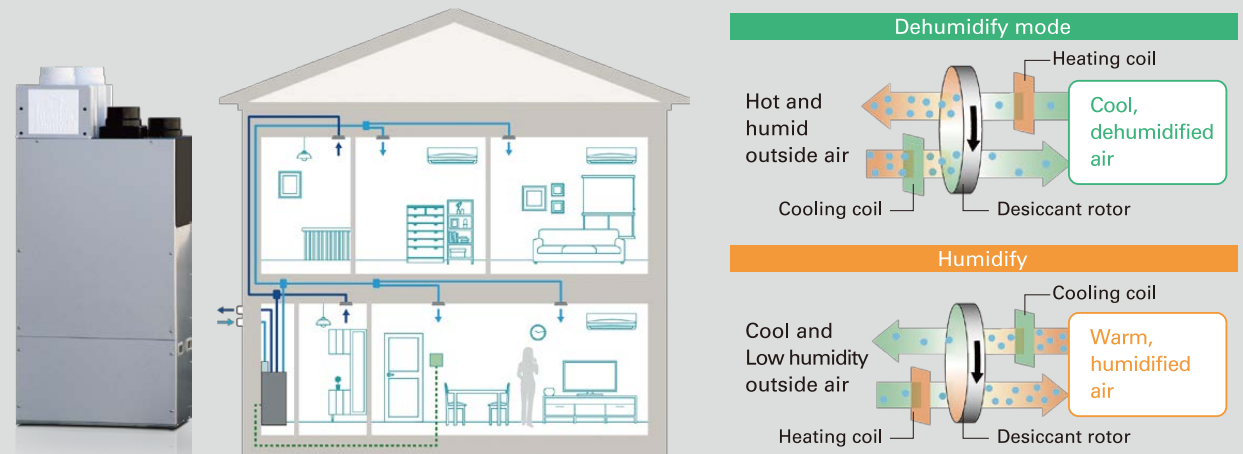
We are providing wide range of home ventilation system. Considering the high airtightness of recent housings, contributes to solving the problem of sick building syndrome caused by chemical substances such as formaldehyde. DesiTop Multivent assists air conditioning by dehumidifying, humidifying, heating and cooling in addition to ventilation, with fan and heat pump technology. This product helps to create a natural and comfortable living environment according to the four seasons of Japan. Our home ventilation system now accomplishes cumulative shipments of 900,000 units, with high reputation among many of top home builders. Topre will continue to support comfortable environment and lifestyle by delivering innovative air-conditioning equipment.

## 24-hour ventilation system "DesiTop Multivent"



The system helps to create a natural and comfortable living environment with 6 ventilation modes

dehumidifying   humidifying   total heat exchange   cooling   heating   bypass



# Creation of information technologies



# Electronic Equipment

## Topre's device technology changes the future of IT society

Information technology is now indispensable at every scene of everyday lives and businesses. Topre was one of the first to notice this trend, and established its unique market position by delivering many kinds of state-of-the-art devices. Utilizing our core device technology, non-contact electrostatic capacitive technology, which uses charge variation at electrode equivalent part, along with manufacturing a wide variety of devices including keyboards, switches, PIN pads and touch panels, we will continue to focus on developing IT solutions.

## Developing the REALFORCE brand

Utilizing our own non-contact electrostatic capacitance technology, Topre has been developing and manufacturing the PC-layout keyboard REALFORCE. Ergonomically designed, REALFORCE provides quiet operation and a smooth key touch. The keyboard offers such benefits as minimized user fatigue even after extended use, as well as high durability. The keyboard is also popular as a gaming device for Esports. The REALFORCE brand will continue to include high performance, high quality products as a PC peripheral device brand.

## Providing embedded devices to industrial machinery manufacturers

Topre supplies PIN pads that are fully compliant with PCI, the global security standard in the credit industry, currently used in bank ATMs, convenience store ATMs, vending machines and payment machines. Also, through customized keyboards and inclusion of water and oil resistance for the touch monitors, Topre products are currently being used as input devices for industrial machinery in the machine tool and semiconductor industries.

## Ergonomically designed keyboard

### REALFORCE



REALFORCE R3 KEYBOARD R3HA11  
Hybrid model with both wireless and USB connections



REALFORCE R3 KEYBOARD R3HG21  
Hybrid model with both wireless and USB connections for Mac computers



REALFORCE R3S KEYBOARD R3SC11  
Standard model with USB connection



REALFORCE RGB  
Capacitive contactless switch Gaming keyboard equipped with Full color LED backlight.

## Development of embedded devices for industrial machinery



PCI PINPAD



15 inch touch monitor



Water and Oil resistant keyboard

# Top Message

Advancement and wider application  
of our metal press forming technology  
for the fulfillment of our customer needs.

Since our establishment in 1935, Topre has been advancing its core technologies, in particular metal press forming technology and die design technology. By applying these core technologies, we now supply a variety of high performance components and products to different industries, including automobiles, temperature controlled logistics, air conditioning systems and electronic equipment, in order to satisfy various demands of our customers.

Topre has a lot of unprecedented advantages such as the integrated production system from design to mass production, flexibility and high technical capabilities as an independent manufacturer, and originality and proposal ability. With these advantages, we are engaged in product development pursuing fulfillment of real market demand.

To date, in response to customer needs, we have established overseas production sites in the USA and Mexico in North America and China, Thailand, Indonesia and India in Asia.

In addition, with the aim of becoming a company that benefits both society and the environment, we have worked as a group to fulfill our CSR, including activities for sustainability, ESG and to become carbon neutral.

At Topre, we will continue to evolve our technological capability to provide solutions for the issues facing our customers and to grow as a company that is an essential part of society.



President

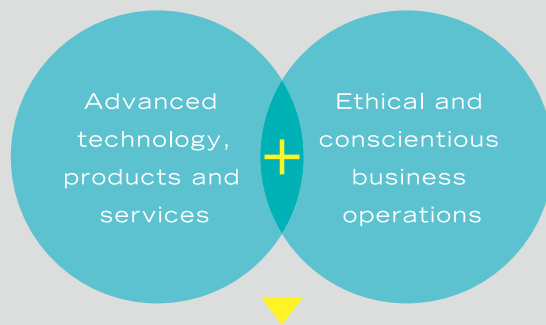


# Basic Principles

The Topre Group's mission is to create products and services by maximizing its technical expertise in order to contribute positively to the societies in which it conducts business.

The Group will not only pursue excellence in its economic performance, but also carry out business activities as a group of international companies with the highest ethical standards, which will promote a Topre Group image that will be acknowledged and respected.

This philosophy will guide The Topre Groups domestic and international business actions, while also continuously seeking to enhance the Group's long term prosperity and making positive contributions to the societies in which it is engaged.



For the contribution to society and the company's prosperity.

# Code of Conduct

## 1 Compliance with Laws, Company Rules, and the Moral Code

- We will comply with the laws and regulations applicable to our business activities.
- We will prepare and enact company rules in order to ensure fair, transparent business activities.
- We will continue to conduct our business in an ethical manner.
- We have established an internal reporting system (hotline) and will properly respond to, prevent and correct any violations.
- Management will establish a highly ethical corporate culture.
- Management will maintain an internal system to prevent situations that breach the Code of Conduct.

## 2 Contribution to Society

- We will provide products and services that make society more safe, convenient and comfortable.
- We will respect the cultures and values of local regions and communities, be actively involved in local activities and contribute to development.

## 3 Fair and Equal Relationships

- We will establish ethical relationships with interested parties.
- We will maintain high transparency in relation to transactions and will not provide or receive benefits or gifts exceeding social norms.
- We will have no relationship whatsoever with anti-social forces, and systematically and firmly respond to any unreasonable demands.
- We will disclose our corporate activities and operating activities in a timely and proper manner.
- We will not engage in any fraudulent, unfair or unjust acts to politicians or members of a government administration.

## 4 Respect for Human Rights and Diversity

- We will respect all human rights and will never permit any form of discrimination concerning race, beliefs, gender/sexuality, nationality, physical differences or other reason, as well as all forms of harassment.

## 5 Promoting environmental protection

- We will work as a group to protect the global environment.
- We will promote the "3Rs" (Reduce, Reuse, Recycle) and energy conservation.
- We will actively work to reduce greenhouse gas emissions.

## 6 Health and safety

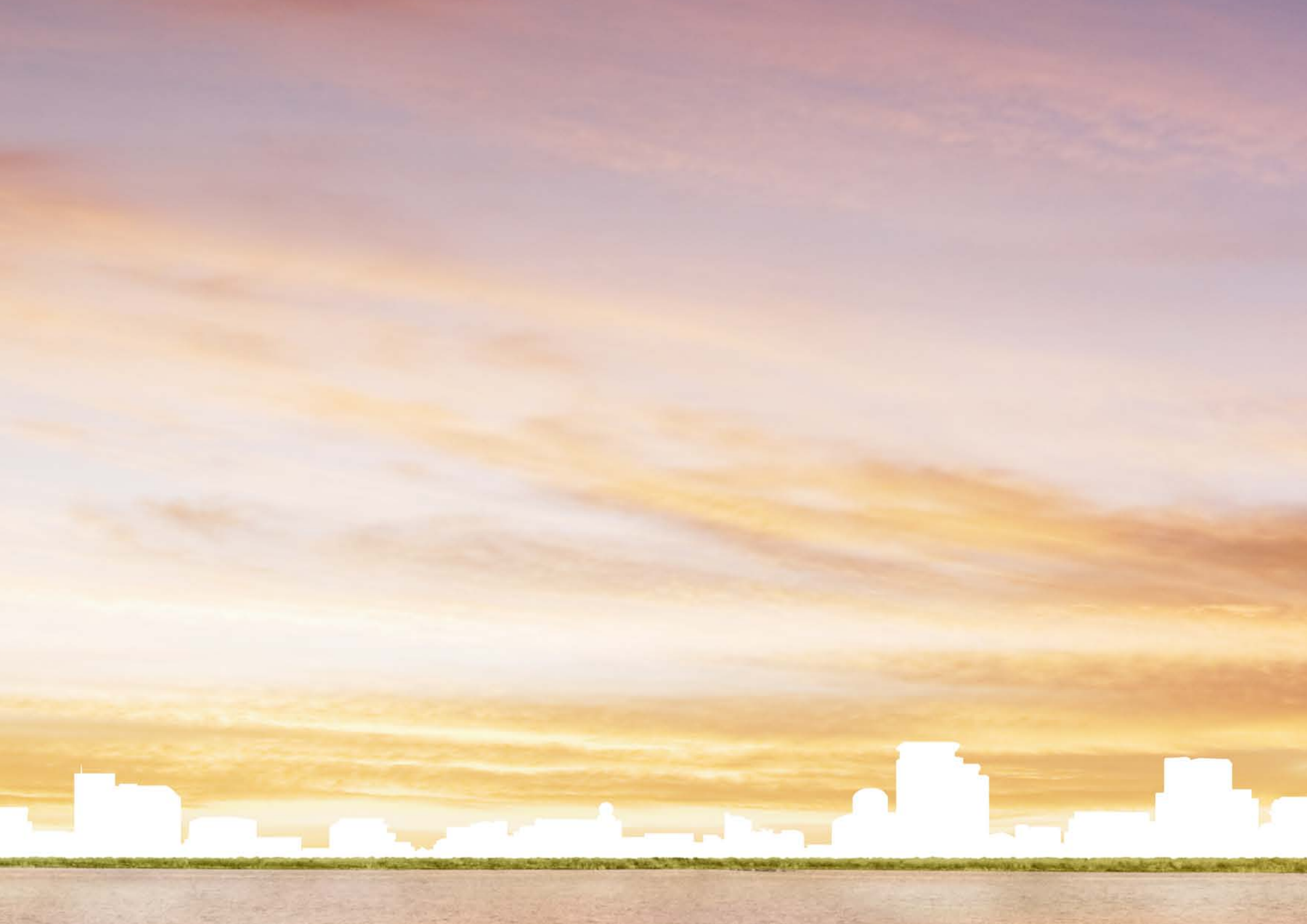
- We will prioritize the health and safety of our employees.
- We will create a safe, healthy workplace environment that is free of on-the-job accidents.

## 7 Company Asset Protection

- We prohibit private use and misuse of company assets.
- We ensure that company-owned information and assets will not be improperly leaked or improperly used.
- Company assets must be acquired, used and released in a predefined manner and will not be used for the benefit of a specific person.

## 8 Information security

- We will prepare and enact rules for managing and protecting personal and confidential information.





***Topre Corporation***

[www.topre.co.jp/en/](http://www.topre.co.jp/en/)

